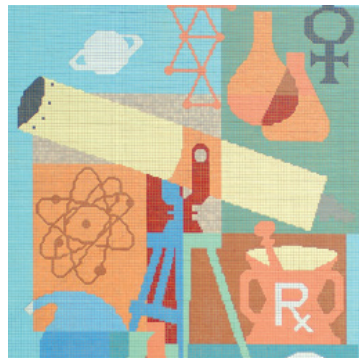


# Financial Aid

## Scholarships



### Inside

[Scholarships Information](#)

[Scholarship Classifications](#)

[Foundation Scholarships](#)

[Other Scholarship](#)

**Build**  
*your*  
**future.**

### Contact

**Nedra Bradley**

Director of Financial Aid  
nbradley@meridiancc.edu  
601-484-8674

**MERIDIAN**  
COMMUNITY COLLEGE

# Financial Aid

## Scholarship Information

Many students receive scholarships at MCC totaling almost \$500,000 each year which are provided through several sources. See the following section for detailed information about MCC scholarships.

Applications for first-time freshman scholarships should be filed at the same time admission applications are filed. Sophomore students and transfer students may begin applying for scholarships after February 1. To receive priority consideration for scholarships, applications should reach the Scholarship Coordinator's Office by April 1. Other applications are considered individually if funds are available.

You must print all of the pages of the application even if you don't use the extra lines (pages) the Financial Aid staff need the pages to enter information. Don't forget to sign and date the form. Mail the completed form to:

Meridian Community College  
Financial Aid Department  
910 Hwy. 19 North  
Meridian, MS 39307

# Financial Aid

## Foundation Scholarships

### **A. D. Burdette Memorial Scholarship**

Awarded to a student majoring in mathematics.

### **A. C. Johnson/Civitan Club Scholarship**

Given to an MCC student who is either a relative of a Civitan Club member or who is a special education or elementary education major. Designated for books.

### **Anderson Hospital Sophomore Nursing Scholarship**

Given to deserving nursing students for their second year of study.

### **Ann Belvin White Memorial Scholarship**

Awarded to a nursing student who demonstrates a special interest in psychiatric nursing.

### **Casteel Memorial Scholarships**

Awarded to students who are majoring in or interested in art or a related field. Students must be taking an art class.

### **William D. Mobley Memorial Scholarships**

Awarded to second-year Dental Hygiene students.

### **Mabel and S. Carl Merritt Scholarships**

Given to outstanding students. Based on need.

### **Maude Smith Memorial Scholarship**

Given to a sophomore student who has an exceptional record in freshman English courses. Financial need and career plans are also considered.

### **Key Brothers Scholarship**

Awarded to a Meridian or Lauderdale County graduate with a 3.00 or higher GPA.

### **Susie Burton Short Memorial Scholarship**

Awarded a student in the LPN Program with a "B" or better in all nursing classes; good clinical performance; leadership potential; and exemplary work ethic.

### **Ralph E. Young Memorial Scholarships**

Awarded to sophomore business majors. Based on merit and need.

### **Barnett All America City Scholarships**

Given to employees of the City of Meridian. Awarded on a first-come, first-served basis, this scholarship pays for one course per semester.

### **Laura O. Williams Memorial Scholarship**

Given to a nursing student. Recipient is asked to perform 10 hours community service each semester. Preference is given to single mothers.

### **Mary Lee Roberts Scholarship**

Given to an education major. Recipient is asked to perform 10 hours community service each semester. Preference is given to single mothers.

### **Austin and Alice James Scholarships**

Given to university transfer students who are taking or have taken accounting. Student must have made an "A" in accounting and have a 3.5 GPA.

### **Stennis "Judge" Little Memorial Scholarships**

Given to students who have completed at least 6 hours with a "B" average. Part-time students are eligible.

### **Madeline Scott Callahan Memorial Scholarship**

Awarded to a student in a health program who has shown a quest for knowledge and a willingness to help others.

# Financial Aid

## Foundation Scholarships

### **Jack Shank History Scholarship**

Given to an education major who plans to specialize in history or social studies. Based on merit and need.

### **Rea, Shaw, Giffin & Stuart Scholarship**

Given to an accounting or computer science major. Based on merit and need.

### **D. P. and Ruby Self Scholarship**

Awarded on the basis of academic excellence and financial need.

### **Reva Breckenridge Memorial Science Scholarship**

Given to a student who plans to be a teacher, preferably in the sciences.

### **Winnie P. Crampton Nursing Scholarship**

Given to a deserving nursing student.

### **MS Association of Supervisors Scholarships**

Given to entering freshmen from a public or private high school in Lauderdale County.

### **Linda And Marty Davidson Scholarship**

Given to outstanding student' Preference given to a student in the arts.

### **W. H. Entrekin Mathematics Scholarship**

Awarded to a mathematics major with an exceptional academic record.

### **W. H. Entrekin Music Scholarship**

Awarded to a student who is interested in music.

### **Sara & Sam Niemetz Scholarships**

Awarded to math majors who have completed 6 hours of transferable math courses with a 3.5 average in those classes.

### **Crescent City Grill Scholarship**

Awarded to an outstanding student in the hotel and restaurant management program.

### **Eva Mae Gilbert Edwards Memorial Scholarship**

Awarded to a deserving full-time student

### **Jack Malone Memorial Scholarship**

Awarded to a student in the construction trades program or the horticulture program.

### **Robert Cochran Memorial Scholarship**

Awarded to a graduation sophomore who plans to attend Mississippi State University or Milsaps College; Has to have been a contender for the Ivy Scholarships; Academic performance is the principal criteria

### **J.P. Gant Memorial Scholarship**

Given to an MCC sophomore. Based on merit and need.

### **Otho R. Smith Memorial Business Scholarship**

Awarded to a student who has completed at least 12 hours of business courses with an excellent GPA

### **L. O. Todd Memorial Scholarship**

Awarded to a sophomore who has demonstrated talent in academics, leadership and community service. Financial need and career plans are also considered.

### **Mary Young Minniece Memorial Scholarship**

Given to a sophomore student. Based on merit and need.

### **Bill and Gay Whitworth Scholarship**

Awarded to a sophomore student. Based on merit and need.

### **Joyce Morrison Memorial Scholarships**

Given to nursing students.

### **Bo Russell/Meridian Exchange Club Scholarship**

Given to an incoming freshman from Meridian or Lauderdale County. Based on need and high school record.

# Financial Aid

## Foundation Scholarships

### **Miriam Roberson Memorial Nursing Scholarships**

Given to outstanding nursing students for continuation of their studies in their second year.

### **Charles Armstrong Scholarships**

Given to outstanding Meridian High seniors who will be attending MCC.

### **William & Dorothy Lerner Memorial Scholarship**

Given to an MCC student who demonstrates financial need.

### **William & Dorothy Lerner Memorial Business Scholarship**

Given to a deserving business or marketing student.

### **Elizabeth Riley Memorial Scholarships**

Awarded to sophomore nursing students who are active in the community and who have shown an exceptional caring attitude in clinical settings.

### **Big & Ham Sanders Memorial Scholarships**

Awarded to sophomore university transfer students. Based on merit and need.

### **Dorothy McCauley Bates Memorial Scholarships**

Given to sophomore math or physical science majors.

### **C.B. "Dough" & Alice Rawlings Memorial Scholarships**

Awarded to students who participate in sports as a manager, trainer, batgirl or cheerleader. Based on merit and need.

### **Mae Carroll Thornton Scholarship**

Given to a student who is a mother and is studying in a health care program.

### **Cecil and Doris Seale Scholarship**

Given to a deserving student who is in a two-year degree program.

### **MCC Alumni & Friends Scholarship**

Awarded to a sophomore student based on merit/need.

### **Riley Volunteer Services Scholarships**

Given to a sophomore in a health related field who is active in clubs and services and who has financial need.

### **Reuben S. Johnson Memorial Scholarship**

Given to a student who enjoys playing golf. Does not have to be on golf team.

### **Northwood Golf Association Scholarship**

Given to a student who enjoys playing golf. Does not have to be on golf team.

### **Kiwanis Club Scholarships**

Awarded to students who show promise in academics and citizenship. Designated for books.

### **Dr. Jeff Hollingsworth Memorial Scholarship**

Awarded to a student in their final year of the Associate Degree Nursing Program who has an outstanding academic record, who has financial need, and who has been active in student and community organizations.

### **Dr. William J. Anderson, Jr. Memorial Scholarship**

Awarded to a student in their final year of the Associate Degree Nursing Program who has an outstanding academic record, who has financial need, and who has been active in student and community organizations.

### **Catherine Hovious Nursing Scholarship**

Awarded to an outstanding Associate Degree Nursing student.

### **Rodney Walker Technology Scholarship**

Given to an engineering or drafting major who has financial need.

# Financial Aid Foundation Scholarships

## **Beverly Barham Memorial Scholarship**

Given to a deserving student who demonstrates need. Prefer recipient be member of Dusty Social Service Club.

## **Sallie Mae Bell Memorial Scholarship**

Given to a student who is a graduate of a Lauderdale County high school who is studying elementary education and has a financial need.

## **Dr. Dan Thornton Memorial Nursing Scholarship**

Given to a deserving nursing student.

## **Mary Ann Bonney Riley Elementary Education Scholarship**

Given to an elementary education major.

## **Harry and Vivian Boureau Scholarship**

Given to a sophomore music major.

## **Emma Ruth Corban Scholarship**

Awarded to a student majoring in social science.

## **Marshall and Miriam Deonier Memorial Scholarships**

Awarded to students majoring in religious studies or horticulture.

## **Career Women of Meridian**

Given to a sophomore majoring in banking, finance, accounting, or business administration.

## **John and Ann Johnson Scholarship**

Awarded to a business or education major who is a graduate of a Lauderdale County school. Must have a C average.

## **Jacob Chester Frist Memorial Scholarship**

Given to a nursing student with financial need.

## **Walter and Cora Thompson Johnson Scholarship**

Given to a graduate of West Lauderdale High School who exhibits citizenship, academic excellence, and versatility.

## **Thomas Y. Minniece Memorial Scholarship**

Given to a student from Latin America.

## **Gloria Nuckolls Memorial Scholarship**

Awarded to a student in a health education program who has financial need.

## **Brett Walden Memorial Art Scholarship**

Awarded to a freshman who plans to major in an art field.

## **Dr. O. D. Polk, Sr. Memorial Scholarship**

Awards an African-American or international student in the Associate Degree Nursing Program. Preference is given to single mothers.

## **Dixie Highway School Scholarship**

Awarded to an outstanding student; preference given to a descendant of a Dixie Highway School graduate. Designated for books.

## **Emily Louise McDonald Memorial Scholarships**

Given to outstanding first-year nursing students for continuing study during their second year.

## **Ralph Wilkerson Memorial Scholarship**

Awarded to a student who has completed at least two social science courses during their freshman year with an excellent GPA. Financial need and career plans are also considered.

## **Structural Steel Services Scholarships**

Given to deserving MCC students whose parents or spouses work at Structural Steel Services.

## **Glen Deweese Math Scholarship**

Given to a sophomore student over 25 years of age who is interested in math or a related field.



# Financial Aid

## Foundation Scholarships

### **Nicholas Gianakos Memorial Scholarships**

Awarded to MCC students in the university transfer program.

### **Ruth Van Dyke Nelson Memorial Scholarships**

Awarded to students who plan to transfer to a university. Based on merit and need.

### **C. B. Bailey Memorial Scholarships**

Given to outstanding students. Based on merit and need

### **Wilma G. Freeman Memorial Scholarship**

Given to an education major. Recipient is asked to perform 10 hours community service each semester. Preference is given to single mothers.

### **George and Etta Mac Bounds Memorial Scholarships**

Given to students with a good academic record and financial need.

### **Chuck Nicholson Community Bank Veteran Scholarship**

Awarded to a veteran who has served in a combat area.

### **Royalty Education Scholarship**

Awarded to an outstanding graduating sophomore who plans to continue their education in a field dedicated to work with young people.

### **Marilyn Hampton Memorial Scholarship**

Awarded to a deserving student.

### **Clare Reynolds Memorial Nursing Scholarship**

Awarded to an outstanding student entering their third semester of the Associate Degree Nursing Program.

### **L.J. Davis Memorial Scholarship**

Awarded to a graduate of Enterprise High School entering the University Transfer Program or and Occupational Education Program at MCC. Criteria include potential for leadership, academic, excellence, and high moral standards.

### **Richard F. Riley, M.D., Nursing Scholarship**

Awarded to an outstanding student entering their third semester of the Associate Degree Nursing Program. Preference is given to a male student.

### **Evans Phi Theta Kappa Scholarship**

Awarded to the chapter president of Phi Theta Kappa.

### **Karen Hamilton Memorial Nursing Scholarship**

Awarded to an outstanding student entering their third semester of the Associate Degree Nursing Program. Preference is given to a male student.

### **Laurie M. Autry memorial Scholarship**

Awarded to an outstanding student in the Physical Therapist Assistant Program.

### **Gerry Price Memorial Scholarship**

Awarded to an outstanding student in the Medical Laboratory Technology Program.

### **Lucile Reisman Rosenbaum Memorial Scholarship**

Awarded to a graduating MCC student who is transferring to a senior university. Scholastic performance, exceptional leadership, and financial need are the criteria. The funds are to be paid directly to the institution of the recipient's choice.

### **Katherine Stanford Foster Memorial Scholarship**

Awarded to a student who is a member of Central Baptist Church , 2nd preference to a choral student. This is designated for books.

### **Clifton M. "Buddy" Davis Memorial Scholarship**

Awarded to a Clarke County (MS) student who plays golf, if one is not available it may go to a Lauderdale County student.

### **Norma R Webb Scholarship**

Awarded to a non-traditional single parent female student.

# Financial Aid

## Foundation Scholarships

### **Thomas and Norma Bourdeaux Scholarship**

Awarded to a student with a 'B' average who is studying pre-law, history, or political science. If one is not available this can be awarded to an art student.

### **State Farm Companies Scholarship**

Awarded to a non-traditional student based on financial need and merit.

### **Riley Hospital Scholarships**

Awarded to top students in the nursing and radiologic technology programs.

### **George J. Blackwell Scholarship**

Awarded to a deserving student.

### **Margaret and Bill Smylie Scholarship**

Awarded to a single parent with definite need in the nursing program.

### **Charles and Jean Winright Scholarship**

Awarded to a top recent local graduate.

### **Irene Bradley Memorial Scholarship**

Awarded to a minority student in a health field.

### **Eddie Holladay Scholarship**

Awarded to a deserving student based on merit or need.

### **Dr. George Howell Memorial Scholarship**

Awarded to a student in the nursing program with an excellent academic record.

### **Lee Anne Smith Memorial Scholarship**

Awarded to a deserving student in the University Transfer Program.

### **Dr. Lemann H. and Wilma S. Bounds Scholarship**

Awarded to a student in the health field.

### **Bill Herndon/Downtown Optimist Club Scholarship**

Awarded to a Lauderdale County student who graduates from the Youth Challenge Program.

### **S. A Rosenbaum Scholarships**

Awarded to students in the Construction Trades program.

### **Dr. Jeff Anderson Memorial Scholarship**

Awarded to a student in their final year of the Associate Degree Nursing Program who has an outstanding academic record, who has financial need, and who has been active in student and community organizations.

### **Kathleen Newby McDaniel Memorial Scholarship**

Awarded to a deserving student.

### **Newton Community Healthcare Scholarships**

Awarded to students in either Laboratory Technology, Radiologic Technology, Respiratory Care Practitioner, or Physical Therapist Assistant Programs; Newton County resident; preference given to students who indicate a willingness to work in Newton County after graduation.

### **Garnett and James Cox Wilbourn Memorial Scholarship**

Awarded to a deserving student based on merit and need.

### **William J. Gunn Memorial Scholarship**

Awarded to a student in their final year of the Associate Degree Nursing Program who has an outstanding academic record, who has financial need, and who has been active in student and community organizations.

### **Mattie D. Hart-Emma Donald Music Scholarship**

Awarded to a music major to be used for music supplies.



# Financial Aid

## Foundation Scholarships

### **Dr. William Anderson, III Memorial Scholarship**

Awarded to a student in their final year of the Associate Degree Nursing Program who has an outstanding academic record, who has financial need, and who has been active in student and community organizations.

### **Linda and Billy Howard Computer Technology Scholarship**

Awarded to a student studying computer technology.

### **Jacob Toney Memorial Scholarship**

Awarded to a Clarke County resident in a health program.

### **Upward Bound Scholarships**

Recipients selected through Boys and Girls Club.

### **Hotel Restaurant Supply/Jerry Greene Scholarship**

Awarded to a local student majoring in Hotel/Restaurant Management Technology

### **Marguerite Jenkins English Scholarship**

Awarded to a student majoring in English education.

### **Ed Lewis Memorial Scholarship**

Awarded to a deserving student.

### **National Association of Retired Federal Employees Scholarship**

Awarded to a deserving student.

### **WTOK Scholarship**

Awarded to a deserving student in Broadcast Communication Program.

### **Bonita Lakes Mall Scholarship**

Awarded to a recent local graduate of Lauderdale County majoring in business or marketing.

### **Margaret Reed Dulaney Memorial Scholarship**

Awarded to a deserving student.

### **Joe Carson Memorial Scholarship**

Awarded to a sophomore student based on merit and need.

### **Eli Pacetti Memorial Scholarship**

Awarded to an instrumental music student.

### **Maude Reid History Scholarship**

Awarded to a student majoring in history education.

### **H. M. Ivy Scholarships**

Awarded to three outstanding May graduates of MCC.

### **Norma Rawlings Webb Scholarship**

Awarded to a deserving student; preference given to a single parent.

### **Dan Self/Robbie Jones Pre-Law Scholarship**

Given to a student who plans to pursue a career in law.

### **Tommy Webb Memorial Business Scholarship**

Awarded to an outstanding business student.

### **Radio People Scholarship**

Given to an outstanding student in the Broadcast Communication Technology Program.

### **Mitchell Companies Scholarship**

Awarded to a sophomore in the Graphics Communication Program.

# Financial Aid

## Other Scholarships

### **Lauderdale County/Meridian Junior Miss**

Awarded to the winners of the Junior Miss Competition.

### **Winston County Health Care Scholarship**

Given to a student in a health related field who agrees to work after graduation in Winston County.

### **Mississippi Band of Choctaw Indian Scholarships**

The Choctaw Indian Tribe offers numerous scholarships to its constituents to attend MCC.

### **Future Teachers of America (FTA)**

Given to a deserving education major.

### **Lanier Walker Navy League Scholarship**

Given to a deserving MCC student.

### **MCC Band and Chorus Scholarships**

Awarded to MCC band members or chorus members.

# Financial Aid

## Scholarship Classifications

### **The following policies and regulations are used in administering the scholarships for MCC:**

- All scholarship recipients must maintain at least 15 credit hours. Any recipient who falls below 15 credit hours will not be eligible for an academic scholarship in future semesters.
- All scholarship recipients must maintain the grade point average as specified in their award letter. There is no probationary period.
- Any scholarship recipient dismissed from school for disciplinary reasons forfeits his/her scholarship and is not eligible for another scholarship.
- A scholarship recipient who fails to attend school in consecutive fall/spring semester forfeits his/her award.
- Scholarships do not cover fees, such as registration, technology, safety and security, or summer school tuition and fees.
- Any scholarship recipient who officially or unofficially withdraws forfeits his/her scholarship. The student will then be ineligible for a scholarship for the following semester of attendance.
- Any scholarship recipient who withdraws from school is encouraged, but not required to pay back any of his/her scholarship. The student will not receive any refund of scholarship money.
- Scholarships are awarded for a maximum of four semesters.
- Any student in default on any type of financial aid is not eligible to receive any scholarship.

### **Additional Policies for President's and Dean's Scholarships**

- President's and Dean's scholarships are only awarded to first-time, MS resident, and enroll in at least 15 credit hours. To qualify, students must attend MCC the fall semester immediately following their high school graduation. Students who attend MCC during the summer following their high school graduation are eligible for a President's or Dean's scholarship in the fall. Students must apply before the first day of fall semester classes.
- President's and Dean's scholarships are awarded on the basis of the date a completed file is received in the Financial Aid Office, not on the individual's ACT score. A completed file for a President's or Dean's scholarship includes a scholarship application and a copy of the student's high school transcript, including the ACT scores.
- Scholarship awards cannot be raised after the first day of classes for the first semester of enrollment.
- President's and Dean's scholarships are given for four semesters (excluding summers) provided the student maintains 15 credit hours and the required grade point average.