

# CAMPUS *View*

A publication for the students by the students of MCC .....



Know  
the  
rules ...

page 2

[www.meridiancc.edu/campusview](http://www.meridiancc.edu/campusview)

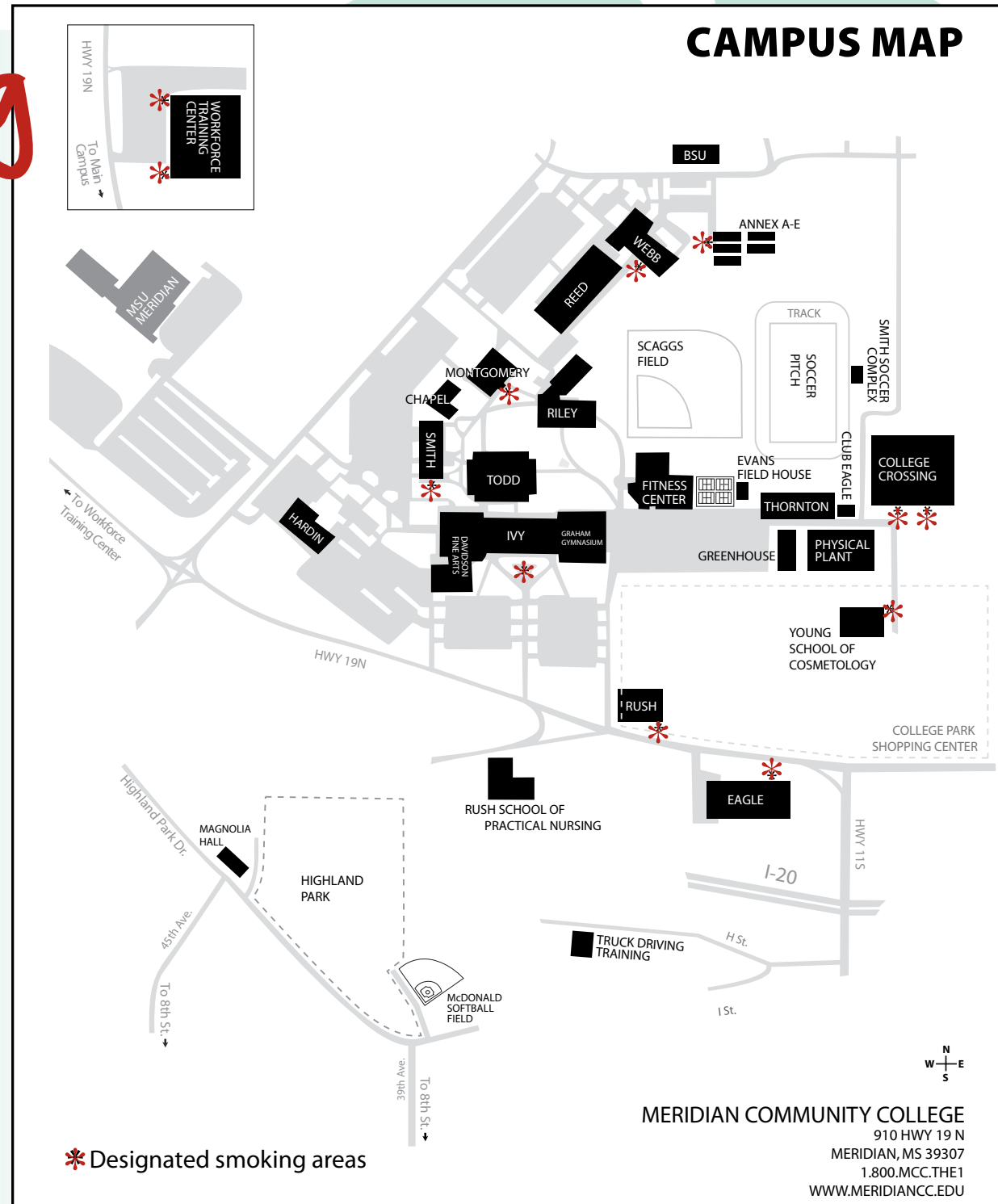
Meridian Community College does not discriminate on the basis of race, color, national origin, sex, disability, religion or age in admission or access to, or treatment or employment in its programs and activities. Compliance with Section 504 and Title IX is coordinated by Soraya Welden, dean of student services, 910 Highway 19 North, Meridian, Mississippi 39307. 1.601.484.8628 Fax: 1.601.484.8635. Email: [swelden@meridiancc.edu](mailto:swelden@meridiancc.edu).



# New Smoking Ordinance

Meridian Community College has specific guidelines for the use of tobacco products on campus. MCC prohibits tobacco use inside any facility owned or operated by MCC. The use of tobacco products is limited to designated areas. See the campus map for the location of all designated tobacco usage areas. **Smoking near any building entrance is prohibited.** This policy applies to all students, faculty, staff and visitors. Violators will face a fine and could face further disciplinary action. Look for the signs around campus.

You will be fined . . .  
 First offense \$25  
 Second offense \$50  
 Third offense: \$100



# Code of Conduct

MCC strives to preserve a learning environment on the campus which is free from disturbances and disruptions. **Students are expected to exhibit self-reliant, acceptable and desirable behavior.** The guiding principles to meet these expectations include respecting the rights of others, being truthful, not participating in unacceptable behavior, or violating federal, state and local laws and ordinances. The following code is applicable to any facility owned or operated by MCC.

# Fine Imposed Unacceptable behavior

## Different situations and types of unacceptable behavior where a fine will be imposed.

The following will be subject to a fine of \$25 for the first offense, \$50 for the second offense, \$100 for the third offense and disciplinary action including, but not limited to, probation or suspension.

- 1. Public profanity, cursing or vulgarity**
- 2. Smoking near any building entrance or smoking outside of designated smoking areas**
- 3. Failure, refusal or inability to present a current MCC ID card upon request** (*Must wear on visible location of one's person at all times when on College property*)
- 4. Unauthorized entry to or use of College facilities**
- 5. Unusually loud noise which creates a public disturbance including, but not limited to, shouting, use of portable radios, use of automobile radios, use of laptops or musical instruments**

# New coaches . . . New start



## BASEBALL

**Chris Curry**, who has previously held assistant coaching positions at the University of Arkansas and Arkansas Tech, was overcome with excitement and anticipation when word of the job coming open reached him in early June after Chris Rose departed for the East Mississippi Community College program after five years with MCC.

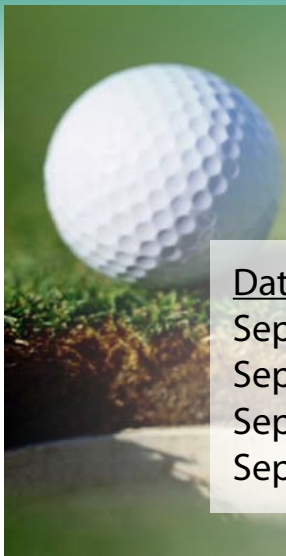
A former Eagle catcher, Curry will look to fill the shoes of the previous MCC skippers that ingrained a strong winning tradition into the Eagles baseball program. Curry played at MCC in 1997-98 before heading to Mississippi State.



## BASKETBALL

**Jeff Walker**, a coach with more than 20 years experience on the high school, college and professional levels, has been selected as MCC's new head men's basketball coach.

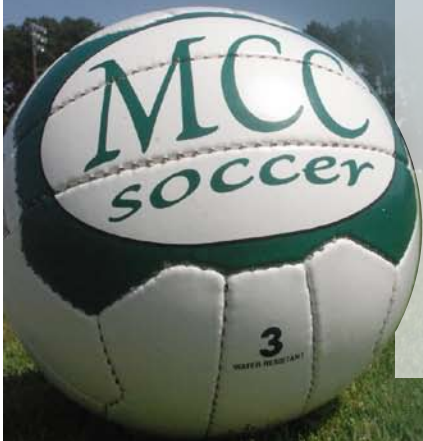
Walker comes to MCC from Indiana Tech University, where he has served as athletic director since 2009. Prior to that, Walker had head coaching stints at Crichton College in Memphis, Grayson County College in Texas, and Hiwassee College in Tennessee, among other hardwood experiences. His collegiate head coaching record stands at 160-86.



## September GOLF SCHEDULE

Date	Tournament	Location	Course	Holes
Sept. 13	Wallace State Fall Invitational	Cullman, AL	Cullman GC	36
Sept. 14	Wallace State Fall Invitational	Cullman, AL	Cullman GC	18
Sept. 27	Jim Redgate Fall Invitational	Meridian	Briarwood CC	36
Sept. 28	Jim Redgate Fall Invitational	Meridian	Briarwood CC	18

Get a  
Kick out  
of Fall!



## September SOCCER SCHEDULE

Date	Opponent	Location	Women	Men
Sept. 8	Itawamba	Away	2 p.m.	4 p.m.
Sept. 10	USC-Salk	Barnesville, GA	5 p.m.	7 p.m.
Sept. 11	USC-Sumter	Barnesville, GA	7 p.m.	5 p.m.
Sept. 14	Southwest	Away	2 p.m.	
Sept. 16	Jones	Home	6 p.m.	
Sept. 21	*Concordia College	Away	3 p.m.	
Sept. 23	*Mississippi College	Away	3 p.m.	
Sept. 28	Hinds	Away	5 p.m.	7 p.m.
Sept. 30	*Union University	Home	4 p.m.	6 p.m.
Oct. 1-2	Rush Invitational	Home		

\* Scrimmage

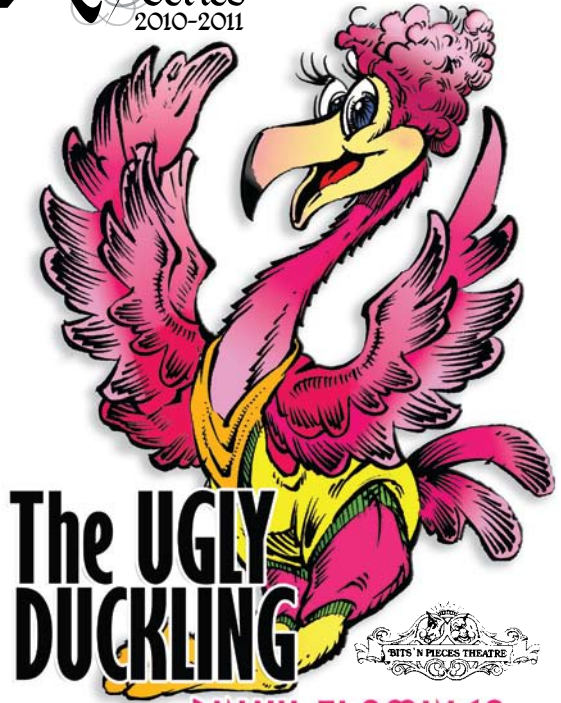
In the world of Art....

Arts & Letters Series  
2010-2011

MERIDIAN COMMUNITY COLLEGE

Bits 'N Pieces  
Giant Puppet Theatre  
The Ugly Duckling

Bits 'N Pieces GIANT Puppet Theatre performs Hans Christian Andersen's classic story, *The Ugly Duckling*, in this original musical adaptation. This high-energy production features towering 9-foot GIANT puppets, costumed characters, traditional puppetry and children from the audience singing and dancing along with adorable Pinky Flamingo played by lead actor Holly Rubin. When unexpected weather forces the Stork to make his Florida delivery to the South Pole, Pinky, a perky, hot-pink flamingo, is hatched by a couple of very proper Polar Penguin parents. During her incredible journey to find her tropical roots, Pinky Flamingo learns just how hard it is to be different. With the help of friends, Pinky discovers the key to acceptance lies within. It's the story of finding your true self and happiness with who you are. Suitable for audiences of all ages.



STARRING PINKY FLAMINGO  
Thursday, Sept. 16 • 7 p.m.  
MCC McCain Theater • Ivy Hall



Ballet Magnificat!

Tuesday, Sept. 28 • 7 p.m.  
McCain Theater

**Ballet Magnificat - Deliver Us!** From the Kennedy Center in Washington, D.C. to Singapore's historic Victoria Theatre, thousands throughout the world have experienced *Ballet Magnificat!*, America's premier Christian ballet company. Under the direction of founder and artistic director, Kathy Thibodeaux, *Ballet Magnificat!*'s mastery of dance rivals that of any other professional company in the world. Graceful shapes soar. Fluent hands inspire. Radiant faces rejoice as dancers weave a tapestry of spiritual, technical and artistic excellence. The story begins as Pharaoh's oppressive regime of bondage is challenged by one man, Moses. Moses finds a hope that can never run dry- a trust in the Almighty Creator. Bolstered by the strength that only God can provide, he returns to Egypt, faces the corrupt Pharaoh and leads the Hebrew people to freedom. The ballet shifts to transport the audience to a pivotal point in history: Jesus Christ on the cross of Calvary. Christ's death leads to resurrection from death, emancipating mankind into powerful freedom! You will be drawn into a story that you will not soon forget! Suitable for audiences of all ages.

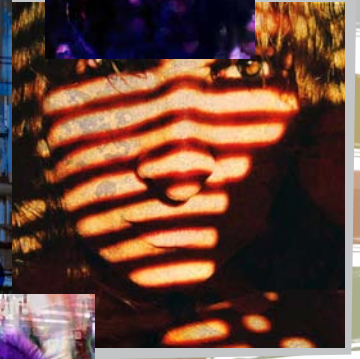
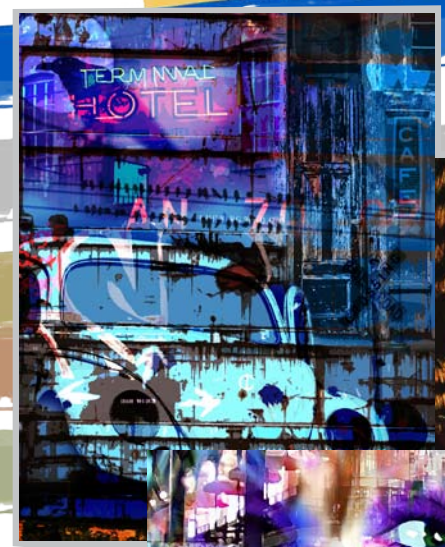
[www.meridiancc.edu/artsnletters](http://www.meridiancc.edu/artsnletters)

MILLER ART GALLERY

2010-2011 Exhibitions

Fall 2010

Cindy McDaniel - Digital Art  
August 30 - September 30  
Reception: Monday, Aug. 30  
4:30-6 p.m.



MERIDIAN COMMUNITY COLLEGE

1.800.MCC.THE.1  
910 Highway 19 North  
Meridian, Mississippi

**Gallery Hours:** Monday - Thursday • 10 a.m. - 4 p.m. | Friday • By appointment only  
For more information contact John Marshall at 601.484.8647.

Meridian Community College does not discriminate on the basis of race, color, national origin, sex, disability, religion or age in admission or access to, or treatment or employment in its programs and activities. Compliance with Section 504 and Title IX is coordinated by Soraya Welden, dean of student services, 910 Highway 19 North, Meridian, Mississippi 39307. 1.601.484.8628 Fax: 1.601.484.8635. Email: [swelden@meridiancc.edu](mailto:swelden@meridiancc.edu)

# Save A Cartridge Save A Child

Wait! DON'T TOSS YOUR  
OLD PRINTER CARTRIDGES.  
Use Them TO FUND  
diabetes RESEARCH!

MCC's Health Occupations Students of America (HOSA) organization will be collecting used printer cartridges (all types) throughout the Fall semester to help the Juvenile Diabetes Research Foundation (JDRF).

You can help by donating your used cartridges. A collection box is located in the Dental Hygiene waiting area in the Riley Health building, room 115.

For more information,  
call 601-484-8755.

[www.jdrfmississippi.org](http://www.jdrfmississippi.org)



## 2010 Fall Academic Calendar

- Late Start Classes Begin .....Sept. 20-21
- Fall Break.....Oct. 7-9
- Term II Classes Begin ..... Oct. 11
- Thanksgiving Holidays.....Nov. 24-27
- Final Exams .....Dec. 6- 9
- Graduation .....Dec. 11

## Wisdom – Pass It On

I turned 47 this summer, so I decided that this was the perfect time to do a general inventory of my life as well as my place in the universe. Hmmmmm. I am now beyond middle age because I really don't see living to be 94 (this being a general trend in my family). Okay. On the plus side, I read a report that said that the rheumatoid Arthritis that I will probably inherit from my mother will somehow offset the Alzheimer's that I will probably get from my grandmother. Ain't life grand? When I was about 15 years old, I remember talking to someone who said that as we became older, wisdom would more than adequately replace our age-related physical deficiencies. Liar. I keep waiting for this tremendous wisdom to spring forth from my head like Athena from Zeus. Or an Adamantium skeleton like Wolverine has only this one would be pure wisdom protecting me from the elements or idiots or the universe. I get nothing even though I realize that the last one is highly implausible. I do find that I am asked things and I sagely nod my head and try my best to give a good answer.

Ya'll are going to think this is gross, but I did decide that for my 47<sup>th</sup> birthday I would have something special done. I got my back waxed. I had been noticing for years that the hair on my head was migrating to my ears and back. It was now time to do something about it. First, let me say that it was more than a little bit embarrassing. I called quite a few places and said, "Do you wax backs?" and was told that they "only wax legs or bikini areas." Then I called a place named the One Universe Salon and was told that yes, they would wax anything I wanted waxed. I made an appointment for the next day and showed up promptly. I was then directed to a room, told to take off my shirt and lie down on the table. A very nice Muslim woman came in and proceeded to talk a blue streak. Well, first off I didn't ask what her religion was (as if I only allow certain religions to touch my person). It came up in conversation when I was asking something about the colored cloth covering her hair; I was basically trying to postpone the inevitable. After finding out her religion, I said, "I used to work in Saudi Arabia, and I know a little about Islam. I'm not sure but I don't think Muslim women are supposed to be touching men they aren't married to."

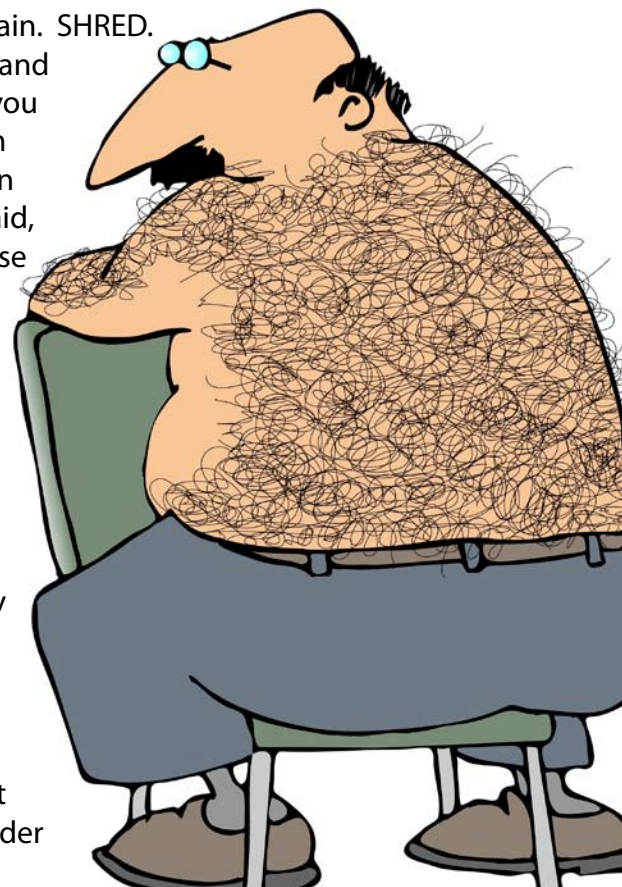
She looked at me with complete disdain and said, "You must

have been talking to them old coots. They live in the 14th century, and they know as much 'bout the Koran as that wall does." She picked up a pan that had something gooey in it, stirred it and said, "And I'm from New York. Let 'em mess with me." I was very impressed. She then put the pan down, looked at my back and said, "You know some of this hair is gray. Let's get rid of it."

She rubbed my back down with some type of antiseptic something or other, picked the pan up, and used the spatula thingy to spread something warm across a bit of my shoulder. Then she took this white, rectangular cloth, rubbed it hard against my shoulder, said, "You ready?" and yanked. I saw stars. My mouth went dry, my stomach dropped and my sphincter clinched. Women actually get other areas waxed? Sensitive areas? I was almost ready to gnaw my arm off to get out of there. And it seemed to go on forever. She was a total sadist. And she talked as if she and I were having a perfectly normal conversation. She told me about her son in high school. RIP. Then she mentioned her daughter in grade school. TEAR. Then she said that it looked like we were getting too much rain. SHRED.

And she would stop every once and a while and say gently, "Honey, you need to breathe." She went from shoulders to middle back. When she got to my lower back, she said, "Get ready. It hurts worse in these fatty regions." I had already left indentions in the edge of the table and I didn't think I would ever have a bowel movement again. ANNIHILATE. I screamed like a 12 year old girl.

She finished and rubbed some lotion on my back which would "help with the pain." Why couldn't she have rubbed that on first? I gingerly put my shirt back on, thanked her profusely, and walked out. I'm sure there's a lesson in there somewhere but I'll let you figure it out. I do wonder what I'll do for my 48<sup>th</sup> birthday. Hmmmmm.





## TeleNav Launches Free Location-Based Classifieds iPhone App for College Students

### Jungle!(TM) Gives Students a Way to Use Their iPhones to Buy, Sell and Trade Items With Nearby Students

SUNNYVALE, CA--(Marketwire - August 19, 2010) - TeleNav, Inc. (NASDAQ: TNAV), one of the largest global wireless location-based services providers with more than 16 million subscribers, today announced a free application for the iPhone and iPod touch- called Jungle!. Jungle! is a convenient way for college students to buy, sell and request products and services in their area, including textbooks, tutoring or even housing, based on their current location.

By posting ads on Jungle!, students create a community marketplace with other nearby students. Jungle! posts and requests are tagged with the approximate location of the item or service, making search results more relevant.

The application has three main categories -- housing, products, and services -- where students can post detailed descriptions with up to four photos and their approximate location. Jungle! also offers a direct messaging feature that connects users to others while protecting personal privacy by preventing users from accessing the exact location, phone number or e-mail address of other buyers or sellers.

Jungle! lets students post an ad for anything from a textbook to a roommate. For example, when posting a housing ad, students can list rent amounts, the number of bedrooms and bathrooms, and include other information such as pet and smoking restrictions. Jungle! makes shopping simple by allowing users to search by item, price and location, all while mobile. Since Jungle! uses the phone's location to guide searches, it only returns products and services in a student's surrounding area. In addition to posting items for sale, Jungle allows users to post an ad for a desired product or service that is viewable in the marketplace. The app also includes a feature that searches for keywords and sends a direct message to the user when an item or service matching their request appears in the marketplace.

"Students always need more ways to find affordably priced items," said Sal Dhanani, co-founder and vice president of products, TeleNav. "For example, college students often buy textbooks from campus bookstores and websites that may not have a good buyback rate. Jungle! helps students buy and sell college textbooks with each other, at a price and convenience that benefits both parties."

#### **College students can use Jungle!'s location-based marketplace functions to:**

**Search for textbooks using ISBN** - Jungle! uses the International Standard Book Number (ISBN) to identify books to ensure buyers are viewing the correct textbook edition.

**Buy or Sell Products** - Jungle! users can buy or sell anything from cell phones to couches to textbooks in new or used condition.

**Find or List Housing** - College students can easily connect with each other and property management agencies to find, view and inquire about rental units.

**Offer or Request Services** -- Jungle! can be used to promote or find a service, such as tutoring, guitar lessons or a volunteer group.

**Ask For What You Want** - Jungle! lets students post a request for a product, housing or service. The app will send a direct message to the user when an item or service matching their search request appears in the marketplace.

**Searches**- Local Classified - Jungle! maps the approximate location of a product or service, making search results relevant to a user's community.

**Post to Facebook**© - Jungle! allows students to promote their products by sending postings to their Facebook page.

**Protect Privacy** - Students won't have to worry about exposing their exact location or personal information because others only see approximate locations. Jungle!'s default setting is a half mile radius. Jungle! only displays usernames and profiles instead of phone numbers and e-mail addresses.

Jungle! is a free application and is available immediately on the Apple App Store for the iPhone 3G, iPhone 3GS, iPhone 4 and iPod touch. To download Jungle! for the iPhone or iPod touch, please visit the Apple App Store at <http://itunes.apple.com/us/app/jungle/id379124990?mt=8>. For more information on Jungle!, go to <http://jungle.telenav.com>, <http://twitter.com/jungle>, or follow Jungle! on Facebook.

-Phone must have GPS and Wi-Fi or wireless services enabled.

For more information on TeleNav, please visit [www.telenav.com](http://www.telenav.com). Follow TeleNav on Twitter at [www.twitter.com/telenav](http://www.twitter.com/telenav) or on Facebook at [www.facebook.com/telenav](http://www.facebook.com/telenav).

# Bookstore News

## Fall 2010 Textbook Refund Schedule

After Sept. 3 - No refund regardless of purchase date

\*Includes internet classes - 8A

## Late Start Classes

Start: Sept. 20---Charge date: Sept. 17-24

Last day for 100% refund - Sept. 24 -- No refunds after this date

## Fall Term II Classes

Start: Oct. 11---Charge date: Oct. 11-14

Last day for 100% refund: Oct. 14 -- No refunds after this date

## DTV CLASSES

Start: Oct. 07---Charge date: Oct. 11-14

Last day for 100% refund: Oct. 14 -- No refunds after this date

## Fall 2010 Book Buy Back

December 6 1:00-3:00

December 7-9 10:00-12:00 and 1:00-3:00

December 9 5:00-6:00

*The Bookstore does not guarantee the buy back of all textbooks.*

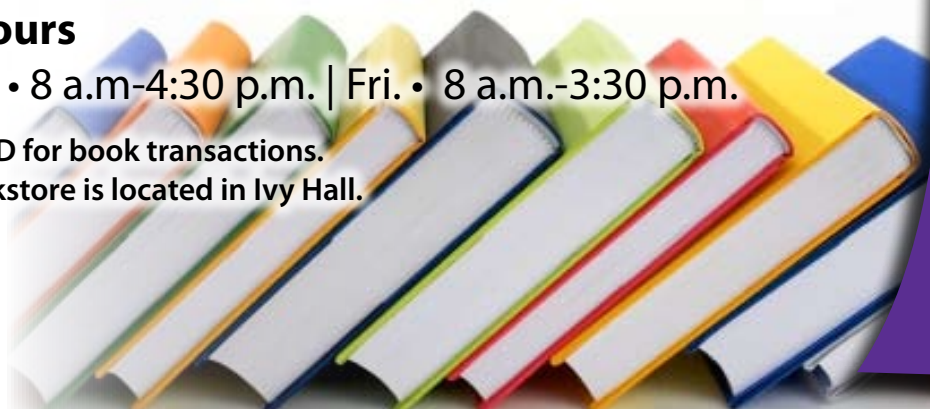
## MCC Eagle's Nest Bookstore

### Fall 2010 Hours

Mon.- Thurs. • 8 a.m-4:30 p.m. | Fri. • 8 a.m.-3:30 p.m.

**MCC ID REQUIRED** for book transactions.

Eagle's Nest Bookstore is located in Ivy Hall.



# Campus Life

The Campus Life Program provides activities designed to complement and supplement classroom education by providing another kind of learning experience. Campus Life involves students in the College and the community, gives them input into college decision-making, provides leadership-training opportunities and creates professional and personal growth opportunities through student organizations.

- Arts Students League (ASL)*
- Baptist Student Union (BSU)*
- Business Student Organization (BSO)*
- College Activities Board (CAB)*
- Delta Epsilon Chi (DEX/HRT)*
- Future Educators of America (FEA)*
- Health Occupation Students of America (HOSA)*
- Horticulture Club*
- MCC Gospel Choir*
- Organization of Student Nurses (OSN)*
- Phi Beta Lambda (PBL- BOT)*
- Phi Beta Lambda (PBL-Computer Tech.,)*
- Phi Theta Kappa (PTK)*
- Restaurant/Hotel Technology (DECA)*
- Skills USA Industrial Club of America (VICA)*
- Student Association of Broadcasters (SAB)*
- Student Association of Cosmetology*
- Student Association of Dental Hygiene Association (SADHA)*
- Student Association of Early Childhood*
- Student Association of Medical Lab Technicians (SAMLT)*
- Student Association Radiologic Technology (Rad Tech)*
- Student Association of Respiratory Care (SARC)*
- Student Practical Nursing Organization (PN)*
- Wesley Campus Ministries*

### Special Interest Groups

A special interest group is an organization that is designed to support specific college functions and is financially supported through the MCC budget. These groups often perform a specific service for the College and are not required to submit all paperwork and do not qualify for incentive funds, awards, or travel money.

- Break-A-Leg Players • Chorus • Cheerleaders/Mascot
- Dimensions • The Ivy League
- Jazz Band • Multicultural Student Association

# In other news...

## From the Business Office

*Reminder* - One half of tuition and fees were due before classes began. Please check Eaglenet to make sure you have fulfilled this requirement. The remaining balance is due no later than Wednesday, Oct. 6.

The last day to charge to your financial aid will be Wednesday, Oct. 6. This includes meal plans, graduation fees, etc. It does not include bookstore charges. Please refer to the bookstore policy for book charge dates.

First loan disbursement will be Monday, Oct. 18  
Second loan disbursement will be Monday, Nov. 15

Current 2010-2011 student I.D. required for refunds. No exceptions!

## Mental Health Counseling is provided at no charge for full-time MCC students

Students who need mental health counseling can contact either agency below to receive up to four free visits.

### Psychology Associates

601-693-8307

### Weems Community Mental Health

Center 601-483-4821

Students must identify themselves as an MCC student when calling to make an appointment. A current MCC ID and schedule is required upon arrival of appointment.

## Need a tutor or computer access?

MCC students can receive computer-assisted instruction and/or one-on-one tutoring in the Student Success Center. Computers are also available for Internet research and word processing.

### FALL SEMESTER HOURS:

Mon. - Thurs., 8 a.m. - 8 p.m.

Friday, 8 a.m. - 2 p.m.

Sat., 8 a.m. - noon

*(beginning Sept. 6)*

The Student Success Center is located upstairs in Montgomery Hall. MCC student I.D. required, drop-ins welcomed, appointments are requested. 601.481.1341

# Job Fair

**Oct. 5**

**10 a.m. - 3 p.m.**

**Sponsored by the Radio People**

## Join one or all of these faith based organizations in the Chapel Activity Room . . .

### BSU

**NOONDAY**

Wednesdays • Noon

### Wesley

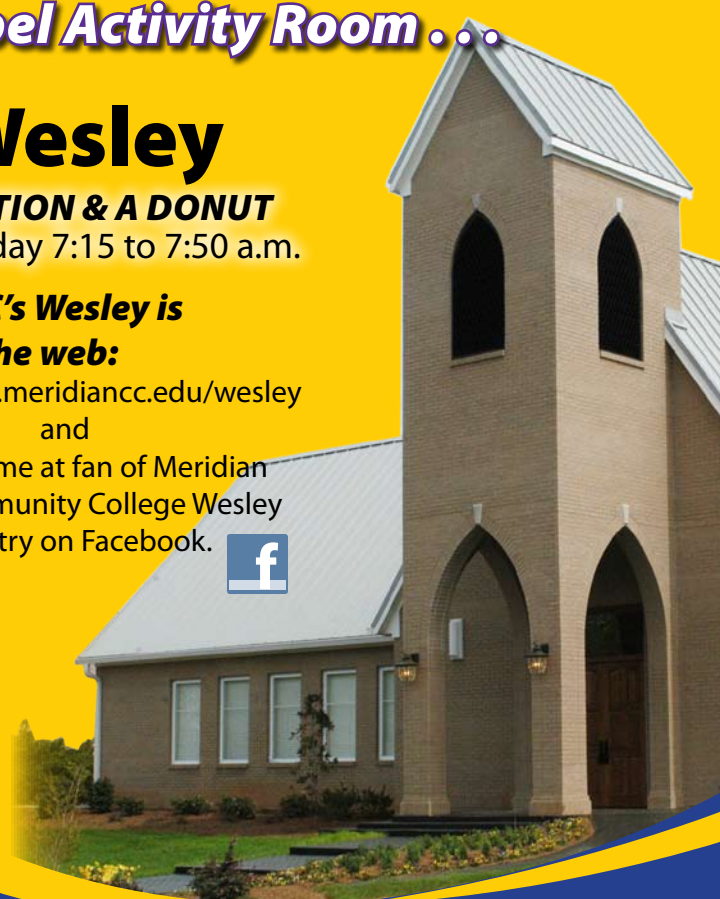
**DEVOTION & A DONUT**

Wednesday 7:15 to 7:50 a.m.

**MCC's Wesley is on the web:**

[www.meridiancc.edu/wesley](http://www.meridiancc.edu/wesley)  
and

become a fan of Meridian Community College Wesley Ministry on Facebook.



## The Gathering

Worship the first Tuesday night of the month  
7 o'clock

Looking for a job? Need help with a resume? Undecided on a career?

### MCC Career Development Center Services

- Career assessments
- Career counseling
- Job placement
- Resume and cover letter assistance
- Professional certifications
- Testing

Hours

8 a.m. - 4:30 p.m., Mon. - Thurs. • 8 a.m. - 2:30 p.m., Fri.  
*Appointments welcomed* • Webb Hall Room 102  
**Darlene Mayatt** • Career Assessment Coordinator  
601-484-8724

Campus View is published by the MCC College Promotions and Public Relations department with the help of MCC students.

Public Relations Director: Kay Thomas  
Editor/Graphic Designer: Amy Miller  
Web Master: Preston Cooper  
Sports Information Director: Sean Covich

Student assistants:

- Chase Cooksey
- Jamie Byrd
- Andy Miller



**EDITORIAL POLICY:** The contents of this publication do not necessarily represent the official policies and views of the College, administration, faculty, students or newsletter staff members except where specifically indicated. The College reserves the right to the final authority for the content of this newsletter.

The deadline for submissions to the Campus View is the fifteenth of the month prior to the month it will be published. Please direct any questions or concerns about this publication to the MCC Promotions Department.

Submit news and advertising to  
Amy Miller, 601-481-1396, TODD 102.  
Email: [amiller8@meridiancc.edu](mailto:amiller8@meridiancc.edu).

